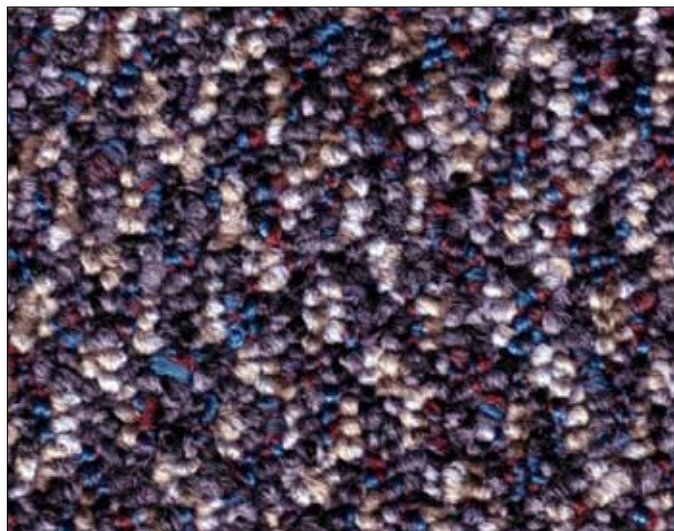
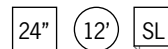




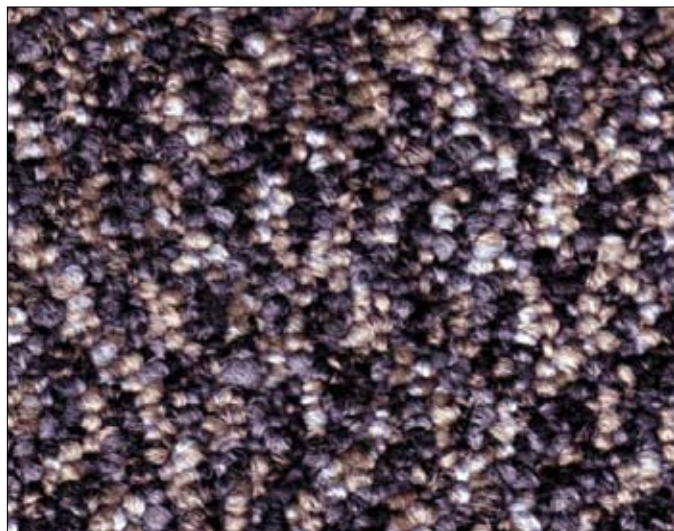
4019 Columbus Blue/Classic



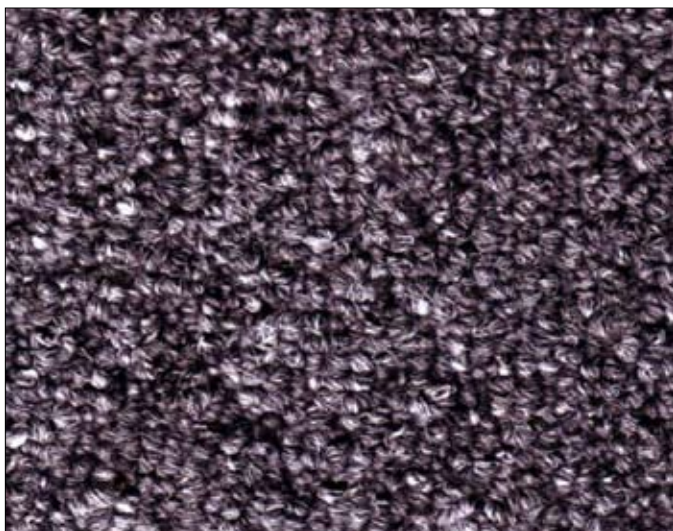
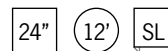
4030 Cortez/Contempo



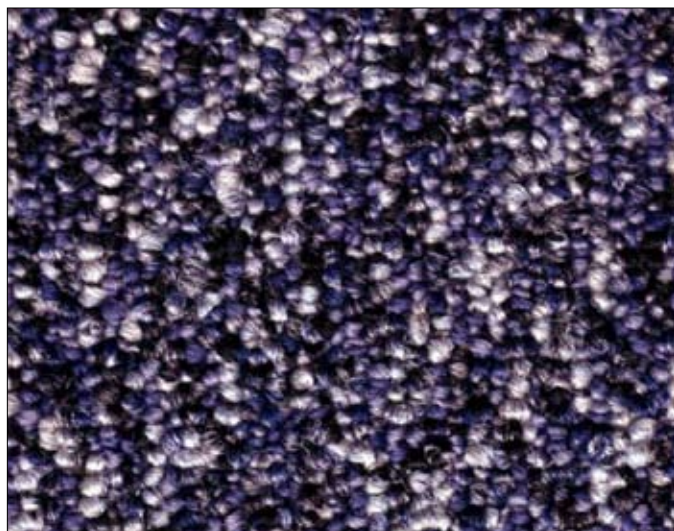
4004 Magellan/Classic



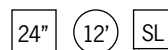
4070 Galileo/Contempo



4012 Shackleton Grey/Classic



4090 Livingstone/Contempo



Discovery Series static control carpet

	Carpet Tile	Broadloom Carpet	StatLock for Access Floors
Construction:	Classic - textured loop, straight/PSP with Ecc Roll Contempo - textured graphic loop	Same	Same
Yarn Weight:	24 oz./sq. yd. (813.76 g/sm)	Same	Same
Total Weight:	98.98 oz./sq. yd.	54 oz./sq. yd.	80 oz./sq. yd.
Stitches per Inch:	Classic - 11 (43.31/10 cm) Contempo - 10 (39.37/10 cm)	Same Same	Same Same
Pile Height:	High: 6/32", low: 4/32" (h: 4.78 mm, l: 3.18 mm)	Same Same	Same Same
Fiber:	Classic - Solutia LXI nylon Contempo - Performa SD type 6 nylon	Same Same	Same Same
Sizes:	24" x 24"	12' broadloom	12.3' factory applied to panel
Conductive Fiber:	Continuous conductive StaticSmart™ FibreLink monofilament in every tuft	Same	Same
kV Rating:	AATCC 134-1996 electrostatic propensity: less than 2 kV. Tested at 20% relative humidity at 20° Celsius and 70° Fahrenheit.		
Electrical Resistance:	<p>ESD S7.1/NFPA 99 Resistive/resistance characterization of materials: RTT six or more readings between points placed 3 feet apart. Tested with an applied voltage of 100V. Measured in Ohms, 2.5×10^4 minimum, 1.0×10^8 maximum. RTG six or more readings from surface to groundable point. Tested with an applied voltage of 100V. Measured in Ohms, 2.5×10^4 minimum, 1.0×10^8 maximum</p> <p>Electrical Resistance/Voltage Test ANSI/ESD S-20.20, compliant when using approved conductive footwear system. Results within recommended range $< 35 \times 10^6$ Ohm or < 100 volts</p> <p>D.O.D. HDBK263A, Section 40.1.2: Meets recommended guidelines for sensitive ESD devices, Class 1.</p> <p>Meets FAA-STD-019e and Motorola R56 standards and guidelines for static control flooring.</p> <p>Roller Caster Electrical Test (CET) Assessment. After 100,000 chair caster cycles there was no depreciable change in conductivity or electrical performance. Lab data available on request.</p>		
Groundable Path:	StaticSmart™ ground strip or RTG Connector™ Kit	StaticSmart™ ground strip	Ground panel to pedestal head
Grounding Frequency:	1 per 1,000 sq. ft.	Same	Each panel
Backing Systems:	Conductive Ecoworx® backing 100% PVC-free recyclable, made from recycled material	Dissipative unitary	StatLock dissipative polyurethane w/20# tuft bind and 10# edge lock
Adhesives:	Conductive releasable adhesive for carpet tile 1.0×10^6 Ohms RTT	Premium high grade multipurpose	Conductive contact adhesive supplied by access floor mfr. 1.0×10^6 Ohms RTT
Availability:	Standard colors - no minimum. Custom colors and sizes - minimums may apply, please call for details		
Flammability:	ASTM E-648 flooring radiant panel - Class 1 ($\geq .45$ W/cm ²)	Same	Same
	ASTM E-662 NBS smoke density - less than 450	Same	Same
Installation:	Multi-Directional or Brick Ashlar		

N + 1 PERMANENT STATIC PROTECTION

*Ecoworx® is a registered trademark of Shaw, a Berkshire Hathaway Company

**This information is accurate and current but may be subject to change without notice. REV 12/07

Julie Industries, Inc.
134 Park Street / PO Box 153
North Reading, MA 01864
978.276.0820
www.julieind.com



Contract Holder
FSS Contract GS-27F-0040N



ROLLER
CASTER
ELECTRICAL
TEST
PROVEN



Tested and approved in accordance with the Carpet and Rug Institute's indoor air quality testing and labeling program. For more info call 800 822-8846.